

# RCS

## Remote Counter & Switch



Pulse counter  
with modem and  
switch

### Remote reading of meters.

With the Remote Counter & Switch pulses from meters with a pulse output, such as heat meters, electricity meters and gas meters can be counted. The counters can be read through a telephone line, or be reported by the RCS at a preset time. The RCS also has outputs that can be remote controlled. Through the telephone line devices can be switched on and off.

### Programmable functions.

The RCS can be programmed through the modem connection. The required software is delivered with the RCS. The programmable functions are:

- Set the time at which outgoing messages are sent.
  - Set the number that is called automatically, or called when call-back is activated.
  - Set the time and frequency of calling.
- The RCS can be programmed to call each day, a certain day of the week or an arbitrary first day of the month.

### Security.

The RCS can be programmed to automatically call back after being called. The RCS calls a preset number, so it can only be read-out from that location.

### PC software functions.

Installed units can be called with the supplied software to read the counter values. The software also answers incoming calls from RCS units.

### Features

#### 8 pulse inputs.

Stores the counter value of each input of:

- today since midnight
- yesterday
- this week (week starts on Monday)
- last week
- this month
- last month
- this year
- all previous years

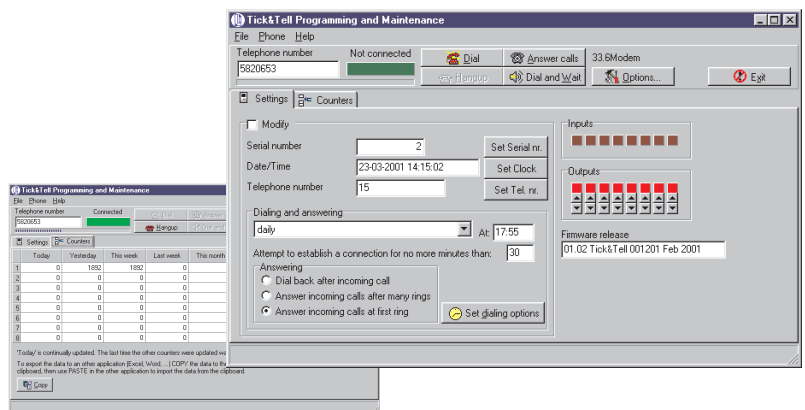
#### 8 open-collector outputs.

#### Programmable functions:

- set time at which the RCS calls automatically
- set call-back frequency and day
- set call-back number

Built-in clock. The clock can be synchronized with the PC clock automatically.

The software can export the obtained counter values for further processing. The outputs of the RCS can be controlled with the software. The counter inputs can be sampled to see if the input signal is high or low, so that the RCS can also be used to read status signals (for example alarms).



# Leiderdorp Instruments

Splinterlaan 152  
NL 2352 SM Leiderdorp  
P.O.box 319  
NL 2350 AH Leiderdorp  
The Netherlands

E-mail: [Info@leiderdorpinstruments.nl](mailto:Info@leiderdorpinstruments.nl)

Fax: --31-71 - 541 89 80

Phone: --31-71 - 541 55 14

More information: [www.leiderdorpinstruments.nl](http://www.leiderdorpinstruments.nl)

## Technical specifications RCS

### Inputs (total 8):

- maximum voltage
- minimal pulse duration
- maximum resistance pulse contact
- maximum frequency
- suited for

5.4 V  
10 ms  
1 kOhm  
20 Hz  
opto coupler, relay contact

### Outputs (total 8):

- type
- maximum voltage
- maximum current

open collector (opto coupler)  
30 V  
10 mA

### Telephone/modem connection:

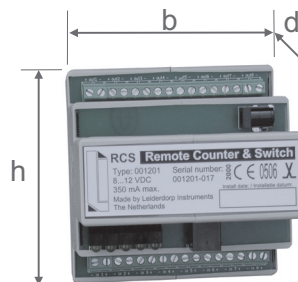
- type
- baudrate

analogue  
2400 baud

### Housing:

- type
- dimensions

DIN rail mounting  
93 (b) x 100 (d) x 96 (h)mm



### Power supply:

- voltage
- current

8...12 VDC  
350 mA max.

## Ordering information:

### Description:

Remote Counter & Switch  
complete with mains adapter  
software and manual on CD

### Reference:

RCS

### Mains adapter for RCS

MA230



## Leiderdorp Instruments

Splinterlaan 152  
NL 2352 SM Leiderdorp  
P.O.box 319  
NL 2350 AH Leiderdorp  
The Netherlands

E-mail: [Info@leiderdorpinstruments.nl](mailto:Info@leiderdorpinstruments.nl)

Fax: --31-71 - 541 89 80

Phone: --31-71 - 541 55 14

More information: [www.leiderdorpinstruments.nl](http://www.leiderdorpinstruments.nl)