

PIB-TH

Pt-100 input board.

The PIB-TH board has 4 Pt-100 inputs. The sensors can be connected in 4-wire mode. The excitation current is 10 mA approximately. The measured signal is linearised according to IEC 571. The accuracy is better than IEC 571 A, the most accurate class. The measured values are degrees Centigrade, there is no further conversion required.

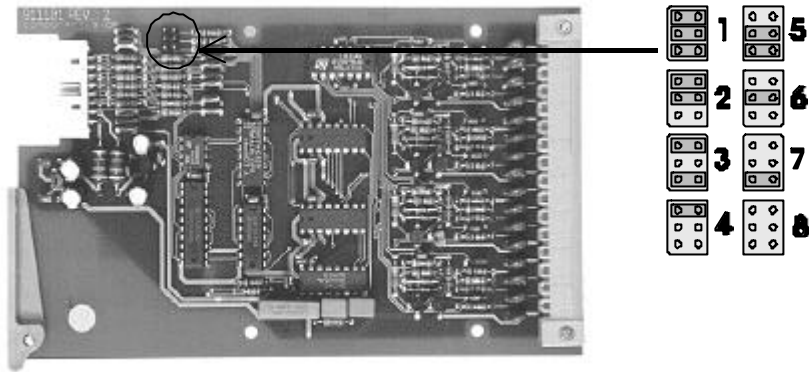
The technical specifications are:

Width in TE's (see PRW)	4
Power requirements:	+/- 15VDC, 50mA
Measuring channels: #1 through 4	Pt-100 sensor inputs
Input type:	4-wire
Jumpers:	station number
Operating temperature:	-10...+50°C
Storage temperature:	-20...+70°C
Accuracy:	IEC 571 class A
Resolution:	32.000 counts
A/D type:	dual slope integrating with 50 Hz suppression

The signal connections are:

Connector pin number	Signal
1	- excitation sensor 4
2	- sense input sensor 4
3	+ sense input sensor 4
4	+ excitation sensor 4
5	- excitation sensor 3
6	- sense input sensor 3
7	+ sense input sensor 3
8	+ excitation sensor 3
9	- excitation sensor 2
10	- sense input sensor 2
11	+ sense input sensor 2
12	+ excitation sensor 2
13	- excitation sensor 1
14	- sense input sensor 1
15	+ sense input sensor 1
16	+ excitation sensor 1

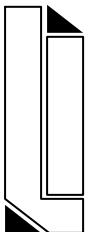
The jumpers are set as follows:



The board returns the measured temperature in degrees Celsius.

If a sensor is connected with only two wires, short the 'excitation +' and 'sense +' and 'excitation -' and 'sense -' on that channel.

You can connect a sensor in 3-wire mode, however the compensation of the wire resistance is based on a 4-wire connection so there will still be a (small) error in the readings.



Splinterlaan 152
2352 SM Leiderdorp
The Netherlands

Leiderdorp Instruments

Phone: (--31) (0)71 - 541 55 14
Fax: (--31) (0)71 - 541 89 80
E-mail: Info@Leiderdorpinstruments.nl
www.Leiderdorpinstruments.nl

P.O.Box 319
2350 AH Leiderdorp
The Netherlands