

# PIB-TL

## Smart temperature sensor inputs.

The PIB-TL input board has 8 inputs for so-called smart temperature sensors. The smart temperature sensors are very low cost sensors with a calibrated digital output signal. All sensors are individually calibrated and produce a calibrated output signal. The output signal is a duty cycle. The on-off ratio is a measure for the temperature of the sensor.

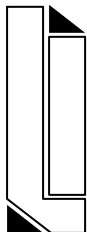
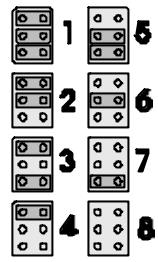
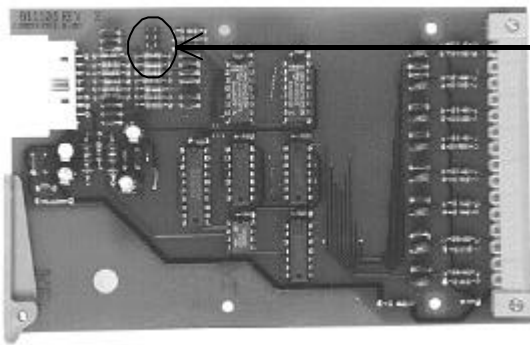
The technical specifications are:

Width in TE's (see PRW)	4
Power requirements:	+15VDC, 7 mA
Measuring channels: #1 through 8	Smart sensor inputs
Jumpers:	board address
Operating temperature:	-10...+50°C
Storage temperature:	-20...+70°C
Sensor:	
Accuracy:	0.25 °C at 23 °C 0.5 °C at -30...100 °C
Non linearity	<0.2 °C at -40...100 °C

The signal connections are:

Connector pin number	Signal
1	Output sensor 8
2	0 V
3	Output sensor 7
4	+ 5 VDC
5	Output sensor 6
6	0 V
7	Output sensor 5
8	+ 5 VDC
9	Output sensor 4
10	0 V
11	Output sensor 3
12	+ 5 VDC
13	Output sensor 2
14	0 V
15	Output sensor 1
16	+ 5 VDC

The jumpers are set as follows:



Splinterlaan 152  
2352 SM Leiderdorp  
The Netherlands

## Leiderdorp Instruments

Phone: (--31) (0)71 - 541 55 14  
Fax: (--31) (0)71 - 541 89 80  
E-mail: [Info@Leiderdorpinstruments.nl](mailto:Info@Leiderdorpinstruments.nl)  
[www.Leiderdorpinstruments.nl](http://www.Leiderdorpinstruments.nl)

P.O.Box 319  
2350 AH Leiderdorp  
The Netherlands